

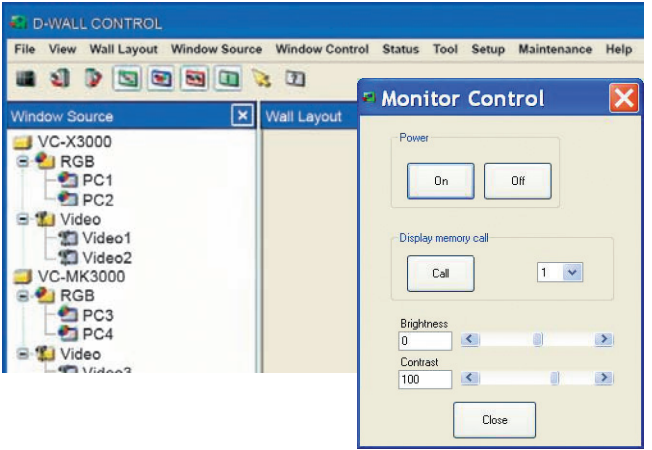


3000 SERIES DISPLAY WALL SUB SYSTEM

A complete display wall sub system from Mitsubishi Electric with DLP® displays, image processing and system control all working together for optimum reliability and control.

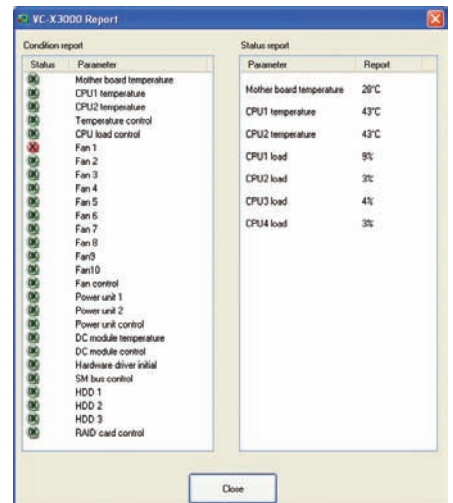
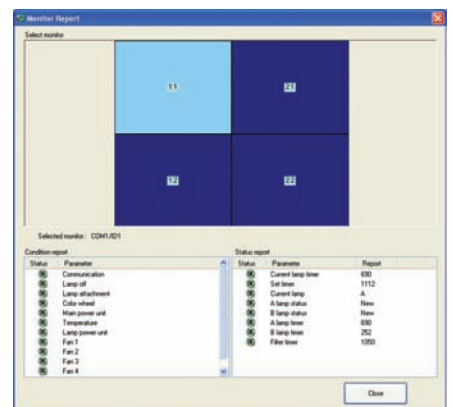
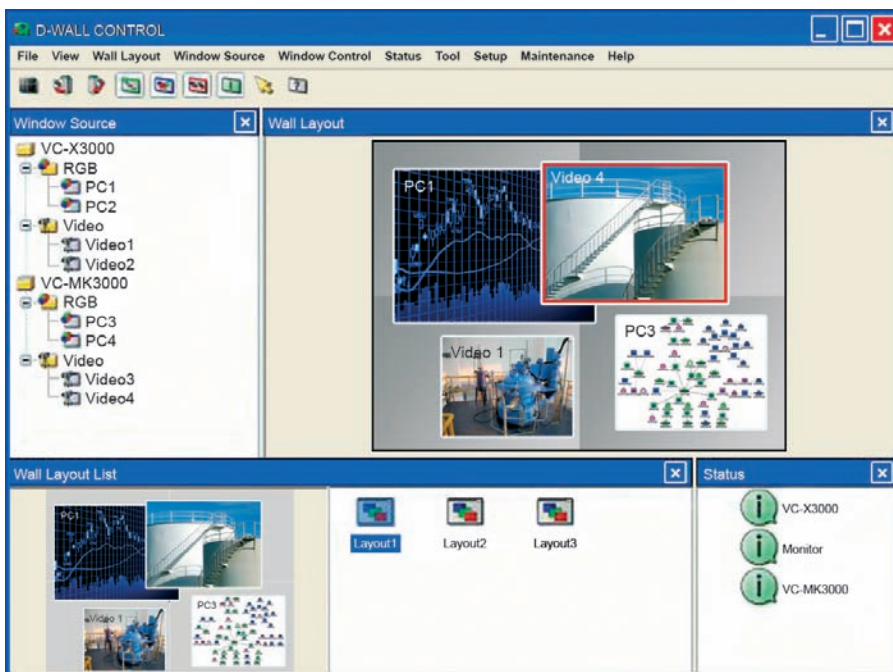
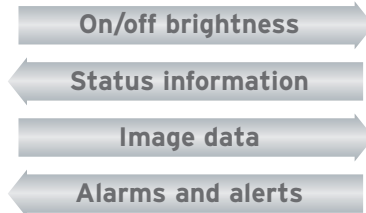


- Mitsubishi Display Engineering is world famous for display walls of outstanding reliability and image quality with many automated features that keep the cubes tuned to give a uniform image across the wall.
- Now the 3000 system adds powerful display wall processing and dedicated display control, managed by Mitsubishi's D-Wall software suite.
- The complete display wall sub-system from Mitsubishi Display Engineering allows the system integrator to install a guaranteed system with components that are made to work perfectly together.
- The 3000 system is a display wall processor and a display wall controller. The D-Wall software suite allows users to turn the wall on and off, adjust brightness and lamp mode and monitor key parameters from all of the display wall cubes.

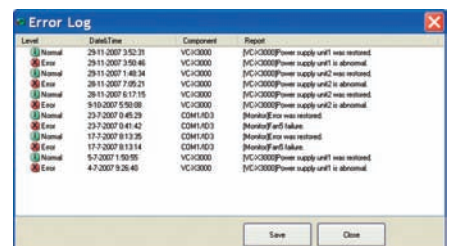


Mitsubishi Electric's D-Wall software suite manages both the display wall cubes and the processors which create the layout. D-Wall can switch the display wall on and off, change brightness and lamp mode and monitor the key operating parameters - sending email alerts if anything needs attention. The system can also control peripheral

equipment, such as video switches and can itself be controlled from a touch panel device to call stored layouts with complete simplicity and reliability. There is also a scheduler to change layouts at predetermined times.



If the system uses both X3000 and MK3000 display wall processors, then sources from both units can be dragged onto the display area and saved in layout files. The D-Wall software integrates everything so the user doesn't have to think about which processor is supplying the images.



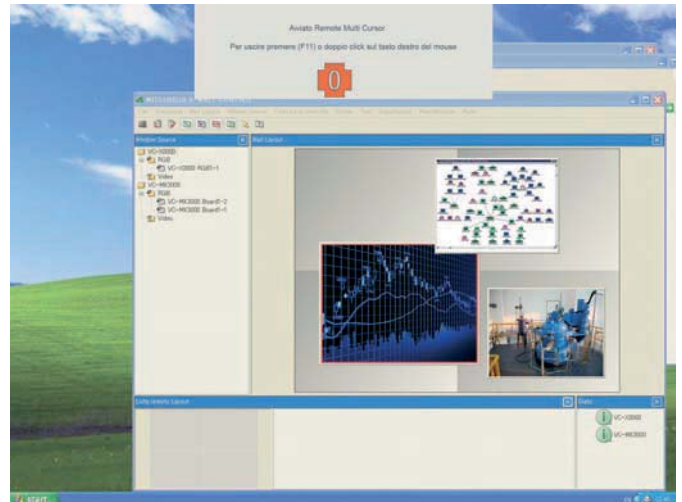
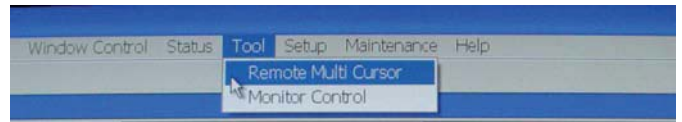
The system monitors and logs status information from display wall cubes and processors.

D-Wall includes applications to support team work in the control room, such as a 'ticker' utility to display alerts and notices on the wall.

There is also a multi mouse-cursor which allows several users to move their own colour coded, numbered mouse cursor on the wall any of which can interact with applications running on the X3000 processor.



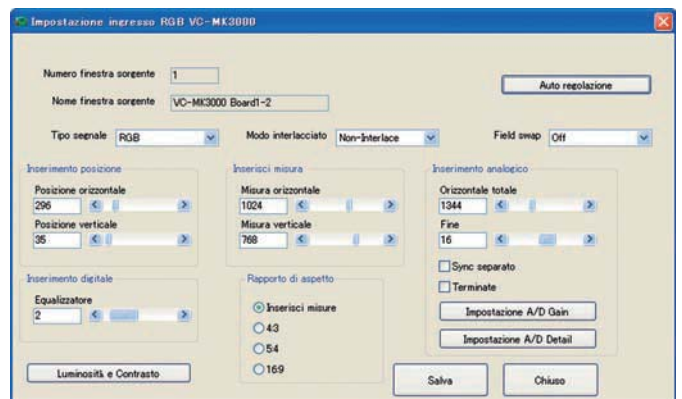
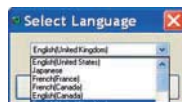
Remote Multi Cursor



Each user's cursor is numbered and coloured when dormant and becomes a cursor arrow when in use.

D-Wall is designed for multi-language use. Several European languages are included and new languages can be added by look-up table.

As well as language customisation, the customer's name, or the name of the facility or system can be shown on the menu headers.



Find more details about the X3000 and MK3000 processors and the range of display wall cubes and other installation displays at www.MitsubishiDisplayEngineering.com.

The 3000 series display wall sub system from Mitsubishi Display Engineering - one thing less to worry about.



Mitsubishi Electric Europe BV. - Benelux Office, Nijverheidsweg 23A, 3641 RP Mijdrecht, The Netherlands
 Tel: +31 (0) 297 - 28 24 61 Fax: +31 (0) 297 - 28 39 36
www.MitsubishiElectric.nl Email: info@mitsubishi.nl



DISPLAY ENGINEERING